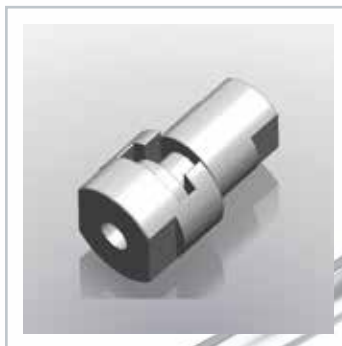
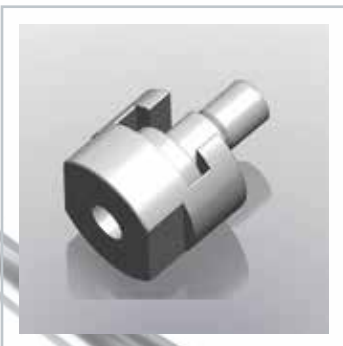
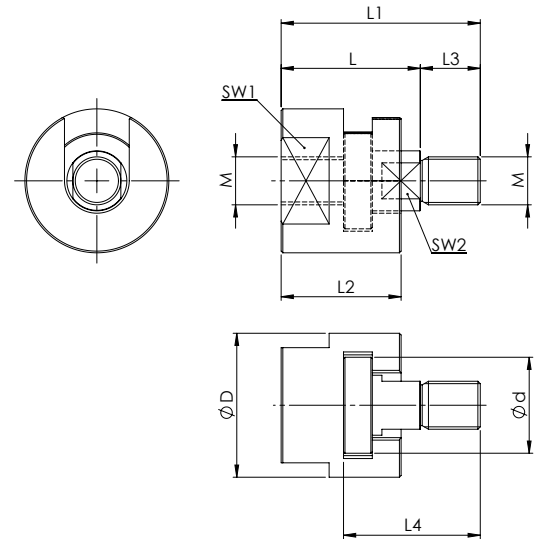
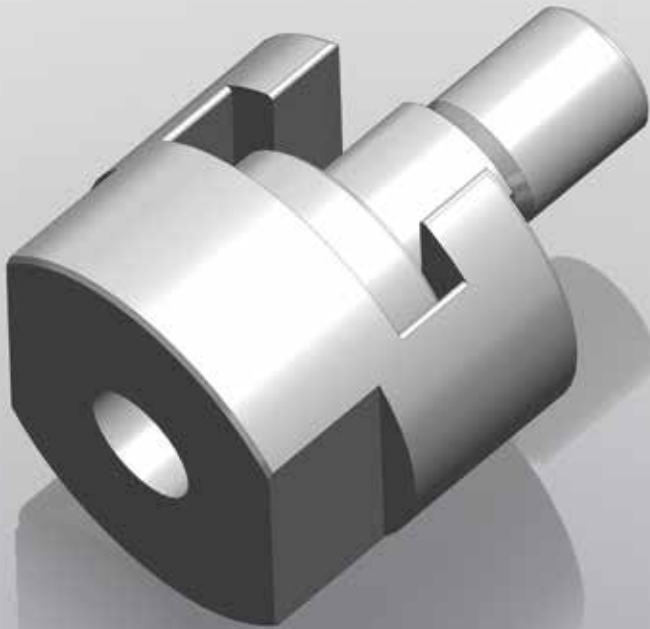


Produktkatalog

AUSGLEICHKUPPLUNGEN für Pneumatik-Zylinder



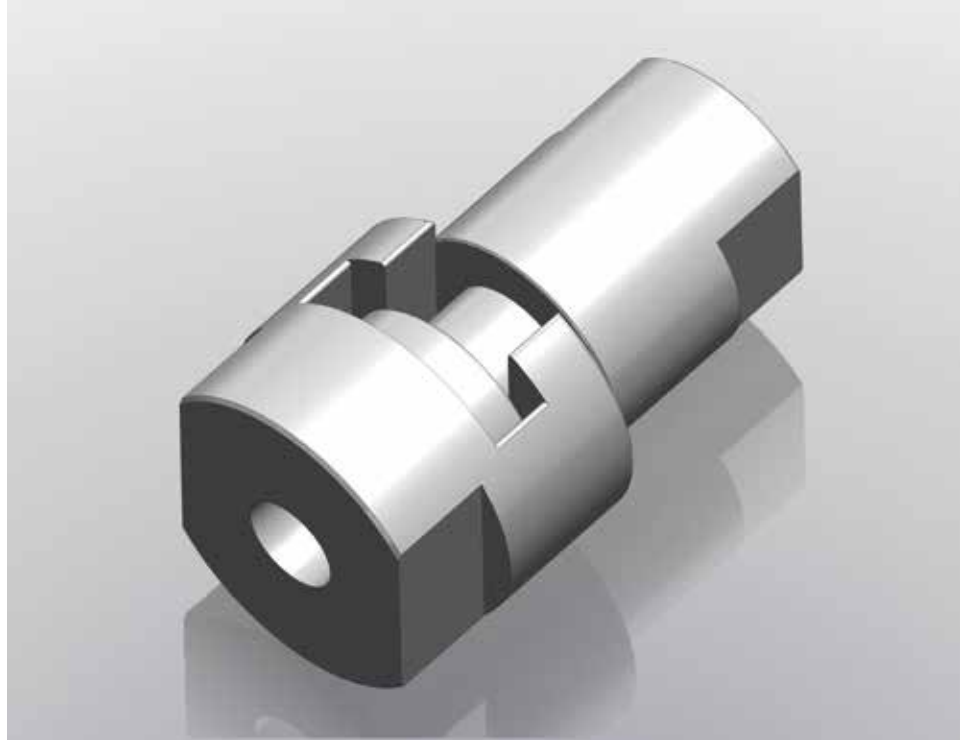
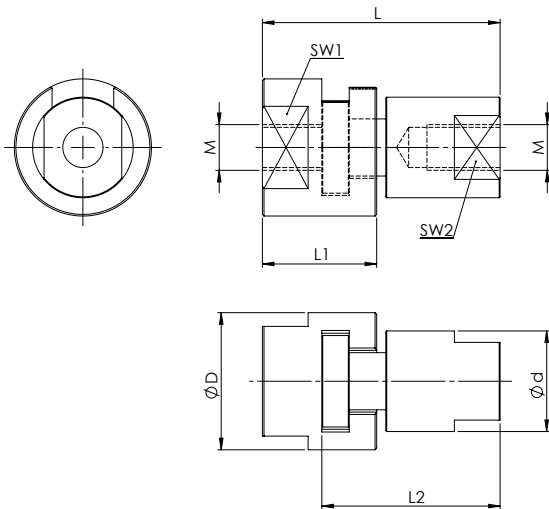
Kupplungssatz



Bezeichnung	Größe	D	d	L	L1	L2	L3	L4	SW1	SW2	M	Ident-Nr.
JAK-S-05-KS-1000	05	15	10	16	22	13,5	6	15,5	13	5	M5	1000-0005
JAK-S-06-KS-1000	06	20	12,5	18	26	16	8	18	15	7	M6	1000-0006
JAK-S-08-KS-1000	08	24	16	22	32	20	10	22	19	9	M8	1000-0008
JAK-S-10-KS-1000	10	30	20	29	41,5	25	12,5	28,5	24	10	M10x1,25	1000-0010
JAK-S-12-KS-1000	12	38	25	36	52	32	16	36	30	14	M12x1,25	1000-0012
JAK-S-16-KS-1000	16	48	32	45	65	40	20	45	36	17	M16x1,5	1000-0016
JAK-S-20-KS-1000	20	60	40	57	82	50	25	57	50	22	M20x1,5	1000-0020

Ausführung: Stahl vergütet, vernickelt

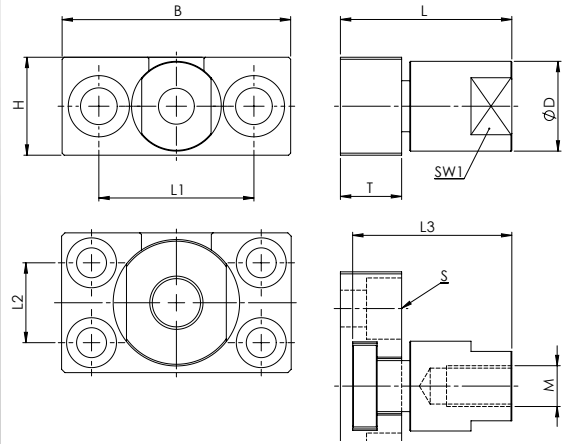
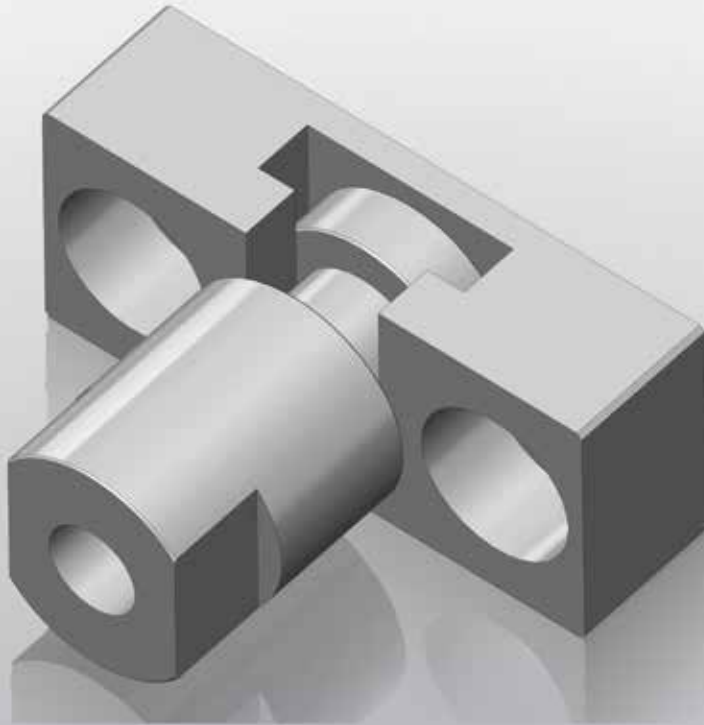
Kupplungssatz



Bezeichnung	Größe	D	d	L	L1	L2	SW1	SW2	M	Ident-Nr.
JAK-S-05-KS-2000	05	15	12	26	13,5	19,5	13	10	M5	2000-0005
JAK-S-06-KS-2000	06	20	15	32	16	25	15	12	M6	2000-0006
JAK-S-08-KS-2000	08	24	18	41	20	31	19	14	M8	2000-0008
JAK-S-10-KS-2000	10	30	22	52	25	39	24	17	M10x1,25	2000-0010
JAK-S-12-KS-2000	12	38	28	64	32	48	30	22	M12x1,25	2000-0012
JAK-S-16-KS-2000	16	48	38	80	40	60	36	30	M16x1,5	2000-0016
JAK-S-20-KS-2000	20	60	45	97	50	72	50	36	M20x1,5	2000-0020

Ausführung: Stahl vergütet, vernickelt

Kupplungssatz

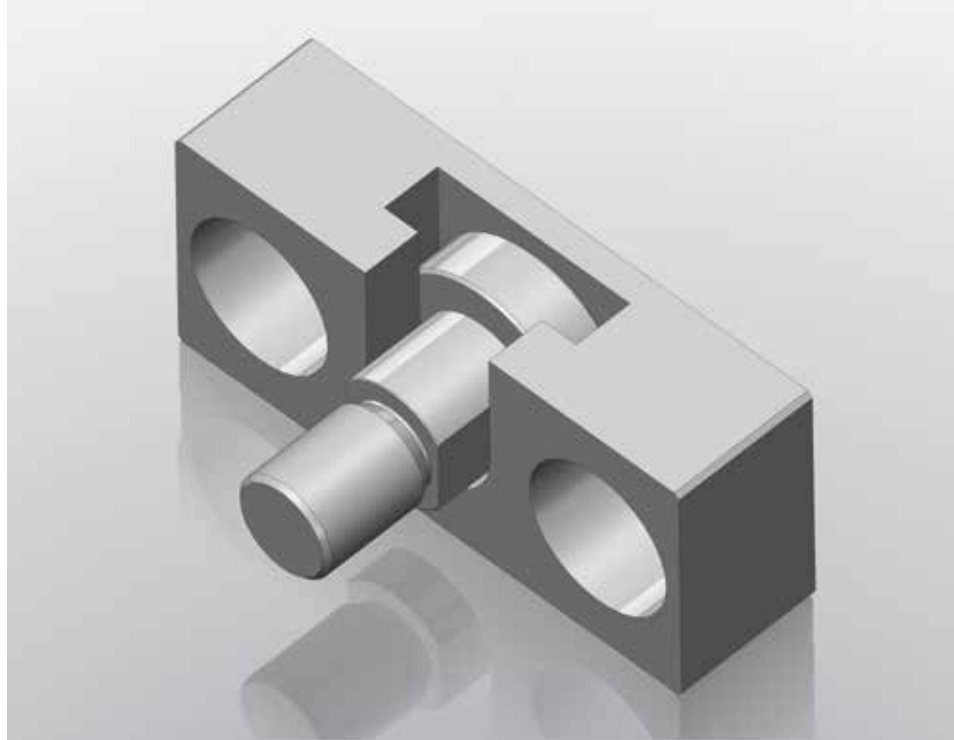
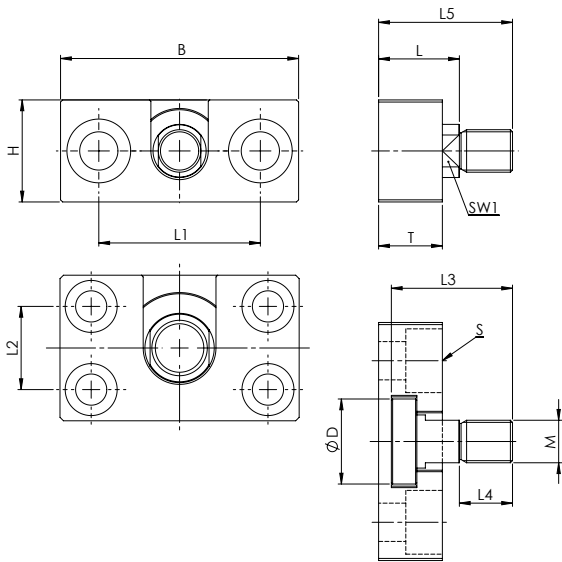


Bezeichnung	Größe	D	L	L1	L2	L3	B	H	T	S*	SW1	M	Ident-Nr.
JAK-S-05-KS-3000	05	12	21	21		19,5	31	13	8,5	M4	10	M5	3000-0005
JAK-S-06-KS-3000	06	15	27	26		25	38	17	10	M5	12	M6	3000-0006
JAK-S-08-KS-3000	08	18	33	31		31	45	20	12	M6	14	M8	3000-0008
JAK-S-10-KS-3000	10	22	42	38		39	56	24	15	M8	17	M10x1,25	3000-0010
JAK-S-12-KS-3000	12	28	51	44		48	62	30	19	M8	22	M12x1,25	3000-0012
JAK-S-16-KS-3000	16	38	65	51	24	60	69	42	25	M8	30	M16x1,5	3000-0016
JAK-S-20-KS-3000	20	45	79	64	27	72	86	49	32	M10	36	M20x1,5	3000-0020

* für Zylinderschrauben DIN 912

Ausführung: Stahl vergütet, vernickelt

Kupplungssatz

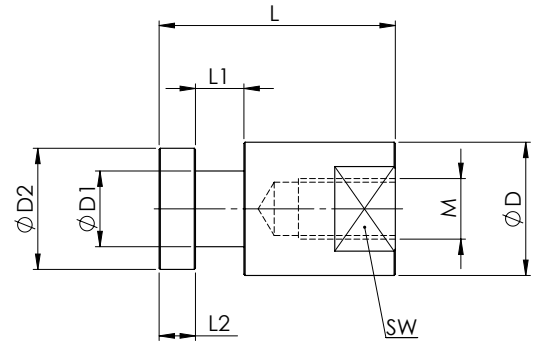
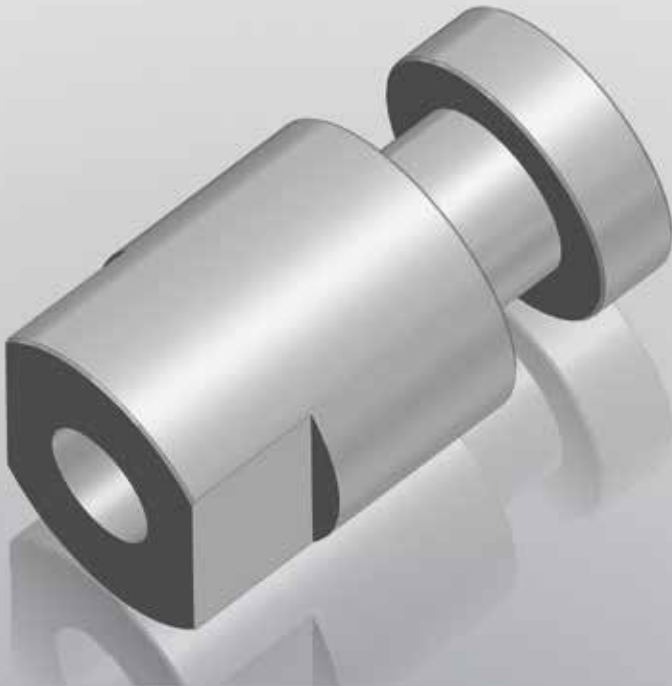


Bezeichnung	Größe	D	L	L1	L2	L3	L4	L5	B	H	T	S*	SW1	M	Ident-Nr.
JAK-S-05-KS-4000	05	10	11	21		15,5	6	17	31	13	8,5	M4	5	M5	4000-0005
JAK-S-06-KS-4000	06	12,5	12	26		18	8	20	38	17	10	M5	7	M6	4000-0006
JAK-S-08-KS-4000	08	16	14	31		22	10	24	45	20	12	M6	9	M8	4000-0008
JAK-S-10-KS-4000	10	20	19	38		28,5	12,5	31,5	56	24	15	M8	10	M10x1,25	4000-0010
JAK-S-12-KS-4000	12	25	23	44		36	16	39	62	30	19	M8	14	M12x1,25	4000-0012
JAK-S-16-KS-4000	16	32	30	51	24	45	20	50	69	42	25	M8	17	M16x1,5	4000-0016
JAK-S-20-KS-4000	20	40	39	64	27	57	25	64	86	49	32	M10	22	M20x1,5	4000-0020

* für Zylinderschrauben DIN 912

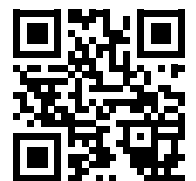
Ausführung: Stahl vergütet, vernickelt

Kupplungsbolzen



Bezeichnung	Größe	D	D1	D2	L1 _{H11}	L2 _{d11}	SW1	M	Ident-Nr.
JAK-B-05-KB-5000	05	12	6	10	4,5	3,5	10	M5	5000-0005
JAK-B-06-KB-5000	06	15	8	12,5	5	4	12	M6	5000-0006
JAK-B-08-KB-5000	08	18	10	16	6	5	14	M8	5000-0008
JAK-B-10-KB-5000	10	22	12,5	20	8	6	17	M10x1,25	5000-0010
JAK-B-12-KB-5000	12	28	16	25	10	8	22	M12x1,25	5000-0012
JAK-B-16-KB-5000	16	38	20	32	12	10	30	M16x1,5	5000-0016
JAK-B-20-KB-5000	20	45	25	40	14,5	12,5	36	M20x1,5	5000-0020

Ausführung: Stahl vergütet, vernickelt



JAKOMA

JAKOMA GmbH
Gottlieb-Daimler-Straße 7
74385 Pleidelsheim

Telefon : +49 (0)7144 / 887753-0
Telefax : +49 (0)7144 / 887753-20
E-Mail: info@jakoma.de